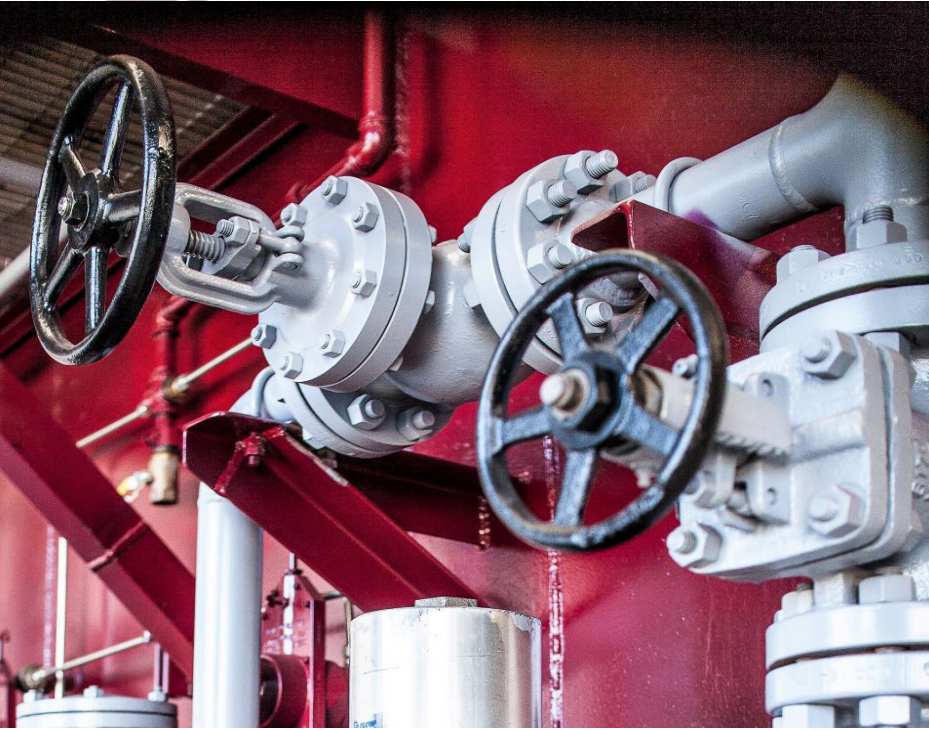


125 HORSEPOWER MOBILE

BOILER ROOM



BOILER INFORMATION

One (1) 125 horsepower mobile boiler room complete with one (1) 125 horsepower steam boiler, combination natural gas or No. 2 fuel oil fired, design pressure 150 psi, capable of producing 5,175 lbs. of steam per hour from and at 212 degrees Fahrenheit.

The boiler comes complete with gas train, oil train, No. 2 fuel oil pump, air compressor, second low water cut-off, pressure controls, flame safeguard control, relief valves, feedwater valves, blowdown valves, a fully modulating burner.

Connection Sizes:

- Main steam outlet – 4", 300# flanged
- Natural gas connection – 2 1/2", 150# flanged
- Maximum inlet pressure to gas regulator – 2PSIG
- Oil is pre-piped
- Feedwater – 1 1/2" MPT
- Propane tank connection size for pilot, if oil fired, 3/8" flared.
- Propane tank provided by others.

Fuel Consumption:

- Natural gas – SCFH
- NO.2 fuel oil – GPH

Also Included:

- One (1) preheated feedwater system
- Two (2) feedwater pumps
- One (1) chemical pump
- One (1) blowdown system
- Electrical switch gear
- One (1) propane hose and regulator for pilot connection, if oil fired
- One (1) 1,000 gallon #2 fuel oil tank
- One (1) main steam stop valve
- One (1) operator's manual
- Pre-piped & enclosed in a 45' trailer.